

Agricultural Duty Motors - General Purpose & Definite Purpose

Explosion Proof
Motors

Automotive
Duty Motors

Pump
Motors

Washguard
Motors

Agricultural
Duty Motors

HVAC / Fan
Motors

Special Voltage
Motors

Definite
Purpose Motors

Brake Motors



- Gasketed capacitor cases and conduit box covers
- Meets or exceeds NEMA service factors
- Single phase and three phase designs
- Double sealed ball bearings
- Double shielded ball bearings on Ag fan motors
- Condensate drains on general purpose Ag motors
- Low temperature manual overload protected
- High and extra high starting torque ratings
- UL recognized component listing and CSA certified
- 1-year warranty

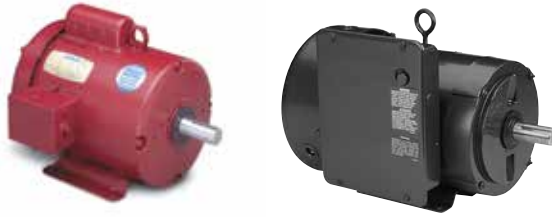
Applications:

For use where exposure to water, dust and dirt exists. Ideally suited for use Farm / Ag equipment such as feeders, conveyors, fans, grain elevators, silo unloaders, and other demanding farm duty equipment.



Agricultural Duty Motors

High Torque - General Purpose



Single Phase - TEFC - Rigid Base

HP	SYN RPM 60 Hz	NEMA Frame	▼ Catalog Number	Stock	List Price	Model Number	App. Wgt. (lbs)	Voltage	Over-load Prot.	F. L. Amps @ 230 V	Service Factor	"C" Dim. (Inches)	♥Notes
1/3	1800	56	113256.00	√	465	M6C17FB66	20	115/208-230	Man.	3.2	1.15	10.81	S, US,
	1800	56	LM24789	√	469	SRF4S0.33T1C6028AP7TP1	24	115/208-230	Man.	3.3	1.15	12.82	S, MX
1/2	1800	56	110086.00	√	541	M6C17FB11	22	115/208-230	Man.	4.4	1.15	10.81	S, US,
	1800	56	LM24790	√	551	SRF4S0.5T1C6028AP7TP1	25	115/208-230	Man.	4.4	1.15	11.82	S, MX
3/4	1800	56	110087.00	√	640	M6C17FB9	26	115/208-230	Man.	5.4	1.15	11.31	S, US,
	1800	56	LM24791	√	648	SRF4S0.75T1C6028AP7TP1	30	115/208-230	Man.	5.5	1.15	12.32	S, MX
1	1800	56	110088.00	√	735	M6C17FB10	30	115/208-230	Man.	7.0	1.15	11.81	S, US,
	1800	56	LM24792	√	740	SRF4S1T1C6028AP7TP1	32	115/208-230	Man.	6.7	1.15	12.82	S, MX
	1800	143T	121569.00	√	740	M143C17FB13	30	115/208-230	Man.	7.0	1.15	12.75	S, US,
	1800	143T	LM24793	√	757	SSF4S1T1C6028AP7TP1	35	115/208-230	Man.	6.7	1.15	12.87	S, MX
1 1/2	1800	56H	110089.00	√	820	M6K17FB3	41	115/208-230	Man.	8.6	1.15	12.61	S, US,
	1800	56H	LM24794	√	835	SRF4S1.5T1B6028AP7TP1	41	115/208-230	Man.	7.6	1.15	13.82	S, MX
	1800	56HZ	113938.00	√	834	M6K17FB39	39	115/208-230	Man.	8.6	1.15	13.25	S, US, 3, 53
	1800	145T	LM24795	√	835	SSF4S1.5T1B6028AP7TP1	42	115/208-230	Man.	7.6	1.15	13.87	S, MX
2	1800	56HZ	110090.00	√	1,175	M6K17FB4	43	230	Man.	9.2	1.15	13.75	S, US, 3, 53
	1800	182T	131541.00	√	1,253	P182C17FB12	50	115/208-230	Man.	12.4	1.15	14.46	S, MX
3	1800	184T	131542.00	√	1,313	P184C17FB13	83	230	Man.	19.0	1.15	16.46	S, MX
	1800	184T	LM24797	√	1,280	SS184F4S3T1C66AP7TP1	92	230	Man.	19.0	1.15	16.46	S, MX
5	1800	184T	131543.00	√	1,645	P184K17FB16	96	230	Man.	20.5	1.15	17.46	S, MX, 53
	1800	184T	LM24798	√	1,674	SSF4S5T1B66AP71TP1	90	230	Man.	20.5	1.15	17.46	S, MX, 53
7 1/2	1800	215T	140707.00	√	1,965	P215K17FB15	144	230	Man.	32.0	1.15	20.21	S, MX, 53
	1800	215T	LM24799	√	2,064	SS215F4S7.5T1B66AP7TP1	130	230	Man.	30.0	1.15	21.09	S, MX, 53
10	1800	215T	140706.00	√	2,301	P215K17FB16	152	230	Man.	40.0	1.15	20.71	S, MX, 53

▼ LM Numbers are Lincoln Models

♥ Note listing on inside back flap

Specifications are subject to change without notice

View On-line Technical Information



Explosion Proof Motors

Automotive Duty Motors

Pump Motors

Washguard Motors

Agricultural Motors

HVAC / Fan Motors

Special Voltage Motors

Definite Purpose Motors

Brake Motors

Agricultural Duty Motors

ECO-Ag - Premium Efficient Farm Duty Motors

Features:

- Up-to 22% higher efficiency than standard Ag Motors
- Sealed bearings
- Shaft flinger - output shaft
- High starting torque
- Manual overload protected
- Weep holes provide condensation drains



Single Phase - TEFC - Rigid Base

HP	RPM 60 Hz	NEMA Frame	Catalog Number	Stock	List Price	Model Number	App. Wgt. (lbs)	Voltage	Over- load Prot.	F. L. Amps @ 230 V	% F.L. Eff.	Service Factor	"C" Dim. (Inches)	♥Notes
1/3	1800	56	117689.00	✓	510	M6K17FB56	27	115/208-230	Man.	1.7	76.0	1.15	10.99	S, US, 53
1/2	1800	56	117690.00	✓	585	M6K17FB57	30	115/208-230	Man.	2.5	78.0	1.15	11.49	S, US, 53
3/4	1800	56	117691.00	✓	703	M6K17FB60	35	115/208-230	Man.	3.2	82.0	1.15	11.99	S, US, 53
1	1800	56	117692.00	✓	792	M6K17FB58	37	115/208-230	Man.	4.2	83.0	1.15	12.49	S, US, 53
	1800	143T	121973.00	✓	802	M143K17FB3	38	115/208-230	Man.	4.2	83.0	1.15	12.93	S, US, 53
1 1/2	1800	56H	117693.00	✓	902	M6K17FB59	43	115/208-230	Man.	6.5	84.0	1.15	13.49	S, US, 53
	1800	145T	121974.00	✓	917	M143K17FB4	44	115/208-230	Man.	6.5	84.0	1.15	13.93	S, US, 53
2	1800	145T	121975.00	✓	1,241	M145K17FB29	49	230	Man.	8.2	85.0	1.15	14.43	S, US, 53

Green items are Premium Efficient

♥ Note listing on inside back flap

Specifications are subject to change without notice

Three Phase Ag Duty Motors - Eco-Ag Designs

Features:

- Premium efficient designs
- Double sealed ball bearings
- Shaft flinger - output shaft
- Normally closed thermostat protected
- Weep holes provide condensation drains



Three Phase - TEFC - Rigid Base

HP	RPM 60 Hz	NEMA Frame	Catalog Number	Stock	List Price	Model Number	App. Wgt. (lbs)	Voltage	Over- load Prot.	F. L. Amps @ 230 V	% F.L. Eff.	Service Factor	"C" Dim. (Inches)	♥Notes
1/2	1800	56	117772.00	✓	569	C6T17FB163	30	208-230/460	T-stat	1.8	77.0	1.15	11.31	S, US
3/4	1800	56	117759.00	✓	623	C6T17FB160	31	208-230/460	T-stat	2.4	81.5	1.15	11.31	S, US
1	1800	56	117760.00	✓	763	C6T17FB161	32	208-230/460	T-stat	3.2	85.5	1.15	12.81	S, US
1 1/2	1800	56H	117761.00	✓	778	C6T17FB162	34	208-230/460	T-stat	4.8	86.5	1.15	13.31	S, US
1 1/2	1800	145T	121997.00	✓	790	C145T17FB98	35	208-230/460	T-stat	4.8	86.5	1.15	13.75	S, US
2	1800	145T	121998.00	✓	823	C145T17FB99	45	208-230/460	T-stat	5.8	86.5	1.15	14.76	S, US
3	1800	184T	132328.00	✓	929	C182T17FB54	80	208-230/460	T-stat	7.8	89.5	1.15	14.96	S, MX
5	1800	184T	132329.00	✓	1,020	C184T17FB67	94	208-230/460	T-stat	12.8	89.5	1.15	15.96	S, MX
7 1/2	1800	213T	141145.00	✓	1,307	C213T17FB22	144	208-230/460	T-stat	21.4	91.7	1.15	18.70	S, MX
10	1800	215T	141146.00	✓	1,579	C215T17FB23	161	208-230/460	T-stat	29.0	91.7	1.15	19.70	S, MX

Green items are Premium Efficient

♥ Note listing on inside back flap

Specifications are subject to change without notice



View On-line Technical Information

Agricultural Duty Motors Hi-Torque and Extra Hi-Torque



Single Phase - TEFC - Extra Hi-Torque - Rigid Base

HP	SYN RPM 60 Hz	NEMA Frame	▼ Catalog Number	Stock	List Price	Model Number	App. Wgt. (lbs)	Voltage	Over-load Prot.	F. L. Amps @ 230 V	Service Factor	"C" Dim. (Inches)	♥ Notes
2	1800	182T	131541.00	✓	1,253	P182C17FB12	50	115/208-230	Man.	12.4	1.15	14.46	S, MX
3	1800	184T	131542.00	✓	1,313	P184C17FB13	83	230	Man.	19.0	1.15	16.46	S, MX
5	1800	184T	LM24802	✓	1,615	SSF4S5TB6008AP8TP1	125	208-230	Man.	22.5	1.15	17.36	S, MX
	1800	213TZ	LM24803	✓	2,006	SS213F4S5TZB66AP8TP1-1	126	230	Man.	22.6	1.15	18.34	S, MX, 53
	1800	215T	140203.00	✓	1,967	P215K17FB3	119	230	Man.	24.0	1.15	18.71	S, MX, 53
	1800	215TZ	140223.00	✓	2,003	P215K17FB5	150	230	Man.	24.0	1.15	18.71	S, MX, 4, 53
7 1/2	1800	215T	140130.00	✓	2,142	P215K17FB2	144	230	Man.	33.6	1.15	20.21	S, MX, 53
	1800	215TZ	140209.00	✓	2,308	P215K17FB4	141	230	Man.	33.6	1.15	20.21	S, MX, 4, 53
	1800	215TZ	LM24804	✓	2,186	SS215F4S7.5TZ1B66AP8TP1-1	125	230	Man.	30.5	1.15	21.09	S, MX, 53
10	1800	215T	140414.00	✓	2,510	P215K17FB6	156	230	Man.	40.0	1.15	20.71	S, MX, 53
	1800	215T	LM24805	✓	2,466	SSF4S10T1B66AP8TP1	150	230	Man.	30.5	1.00	21.09	S, MX, 53

▼ LM Numbers are Lincoln Models

♥ Note listing on inside back flap

5, 7.5, 10 HP Motors deliver starting torque as high as 300-400%
Specifications are subject to change without notice

Single Phase - TEFC - High Torque - C Face Less Base

HP	SYN RPM 60 Hz	NEMA Frame	Catalog Number	Stock	List Price	Model Number	App. Wgt. (lbs)	Voltage	Over-load Prot.	F. L. Amps @ 230 V	Service Factor	"C" Dim. (Inches)	♥ Notes
1/3	1800	56C	113290.00	✓	615	M6C17FC59	28	115/208-230	Man.	3.2	1.15	10.81	S, US,
1/2	1800	56C	110492.00	✓	704	M6C17FC12	22	115/208-230	Man.	4.4	1.15	10.81	S, US,
3/4	1800	56C	110493.00	✓	824	M6C17FC13	29	115/208-230	Man.	5.4	1.15	11.31	S, US,
1	1800	56C	110494.00	✓	934	M6C17FC14	33	115/208-230	Man.	7.0	1.15	11.81	S, US,
1 1/2	1800	56C	110495.00	✓	1,061	M6K17FC3	43	115/208-230	Man.	8.6	1.15	12.31	S, US, 53
2	1800	145TC	120855.00	✓	1,378	M145K17FC13	45	230	Man.	9.2	1.15	13.75	S, US, 53
3	1800	184TC	131603.00	✓	1,869	P184C17FC5	104	230	Man.	19.0	1.15	16.47	S, MX,
5	1800	184TC	131602.00	✓	2,292	P184K17FC7	104	230	Man.	20.5	1.15	17.47	S, MX, 53

Specifications are subject to change without notice

♥ Note listing on inside back flap

Single Phase - TEFC - High Torque - C Face With Base

HP	SYN RPM 60 Hz	NEMA Frame	Catalog Number	Stock	List Price	Model Number	App. Wgt. (lbs)	Voltage	Over-load Prot.	F. L. Amps @ 230 V	Service Factor	"C" Dim. (Inches)	♥ Notes
1/3	1800	56C	116485.00	✓	637	M6C17FK81	29	115/208-230	Man.	3.2	1.15	10.81	S, US,
1/2	1800	56C	116486.00	✓	731	M6C17FK80	23	115/208-230	Man.	4.4	1.15	10.81	S, US,
3/4	1800	56C	116487.00	✓	850	M6C17FK79	30	115/208-230	Man.	5.4	1.15	11.31	S, US,
1	1800	56C	116488.00	✓	965	M6C17FK78	34	115/208-230	Man.	7.0	1.15	11.81	S, US,
1 1/2	1800	56HC	116489.00	✓	1,087	M6K17FK47	44	115/208-230	Man.	8.6	1.15	12.81	S, US, 53
2	1800	145TC	121625.00	✓	1,385	M145K17FK11	46	230	Man.	9.2	1.15	13.75	S, US, 53
3	1800	184TC	131994.00	✓	1,904	P184C17FK10	105	230	Man.	19.0	1.15	16.47	S, MX,
5	1800	184TC	131995.00	✓	2,303	P184K17FK13	105	230	Man.	20.5	1.15	17.47	S, MX, 53

Specifications are subject to change without notice

♥ Note listing on inside back flap

View On-line Technical Information



Explosion Proof Motors

Automotive Duty Motors

Pump Motors

Washguard Motors

Agricultural Motors

HVAC / Fan Motors

Special Voltage Motors

Definite Purpose Motors

Brake Motors

Agricultural Duty Motors

Fan Duty - Single and Three Phase

Two-Winding Variable Torque PSC Type For Shaft Mounted Fan Application

Features:

- PSC designs offer low in-rush current
- Two speed operation - most ratings
- Automatic overload protected
- Resilient mount for quiet operation
- Corrosion resistant finish



Single Phase - TEAO - Resilient Base - PSC Type

HP	RPM 60 Hz	NEMA Frame	Catalog Number	Stock	List Price	Model Number	App. Wgt. (lbs)	Voltage	Over-load Prot.	F. L. Amps @ 230 V	Service Factor	"C" Dim. (Inches)	Notes
1/4	1625	48Z	100803.00	√	360	A4P17NR1	19	115/230	Auto.	1.4	1.00	10.66	S, MX, 16, 34
	1075	48Z	100824.00	√	408	A4P11NR2	20	115/230	Auto.	1.4	1.00	10.66	S, MX, 16, 34
	1075	S56Z	100805.00	√	452	A4P11NJ1	22	115/230	Auto.	1.4	1.00	11.06	S, MX, 17, 34
1/3	1625	48Z	100804.00	√	375	A4P17NR2	21	115/230	Auto.	1.6	1.00	10.66	S, MX, 16, 34
	1625	S56H	100767.00	√	432	A4P17NJ1	22	115/230	Auto.	1.6	1.00	10.31	S, MX, 34
	1625	56HY	111348.00	√	472	A6P17NZ6	24	115/230	Auto.	1.7	1.00	13.44	S, US, 59
1075	48Z	100825.00	√	443	A4P11NR3	25	115/230	Auto.	1.8	1.00	11.16	S, MX, 16, 34	
	1075	S56HZ	100806.00	√	475	A4P11NJ2	27	115/230	Auto.	1.8	1.00	11.56	S, MX, 17, 34
	1625	56HZ	111323.00	√	539	A6P17NR3	30	115/230	Auto.	2.6	1.00	12.56	S, US, 17, 34
1075	S56H	100768.00	√	445	A4P17NJ2	36	115/230	Auto.	2.2	1.00	10.81	S, MX, 34	
	1075	48Z	101645.00	√	478	A4P11NR6	33	115/230	Auto.	2.8	1.00	11.16	S, MX, 16, 34
	1075	56HZ	111321.00	√	560	A6P11NR1	37	115/230	Auto.	3.0	1.00	13.56	S, US, 17, 34
850	48YZ	M099836.00	D	482	A4P8NR1	24	115/230	Auto.	3.0	1.00	11.55	S, CN, 19, 34, 50	
	850	48YZ	A099836.00	√	482	A4P8NR2	24	115/230	Auto.	3.0	1.00	11.55	S, MX, 19, 34, 50
	825	56HZ	111919.00	√	628	A6P8NR2	40	115/230	Auto.	3.2	1.00	13.56	S, US, 17, 34, 50
3/4	1625	56HZ	111324.00	√	590	A6P17NR4	34	115/230	Auto.	3.5	1.00	13.06	S, US, 17
	1625	56H	111266.00	√	590	A6P17NR1	36	115/230	Auto.	3.5	1.00	12.31	S, US
	1075	56HZ	111322.00	√	635	A6P11NR2	44	115/230	Auto.	4.0	1.00	13.56	S, US, 17, 50
1	1625	56HZ	111267.00	√	660	A6P17NR2	39	115/230	Auto.	4.4	1.00	12.81	S, US

D - Item to be discontinued once inventory is depleted

♥ Note listing on inside back flap

Specifications are subject to change without notice

Single Phase - TEAO - Rigid Base - PSC Type

HP	RPM 60 Hz	NEMA Frame	Catalog Number	Stock	List Price	Model Number	App. Wgt. (lbs)	Voltage	Over-load Prot.	F. L. Amps @ 230 V	Service Factor	"C" Dim. (Inches)	Notes
1/4	1750	48Y	101252.00	√	344	A4P17NB27	19	115/208-230	Auto.	1.5	1.00	10.90	S, MX, 50
	1625	48Y	100699.00	√	344	A4P17NB7	19	115/230	Auto.	1.4	1.00	10.65	S, MX
	1650	48Y	M099799.00	D	344	A4P17NB55	19	115/230	Auto.	1.5	1.00	10.79	S, CN
1075	48Y	M099260.00	D	358	A4P11NB23	21	115/230	Auto.	1.2	1.00	10.83	S, CN	
	1075	48Y	A099260.00	√	358	A4P11NB52	21	115/230	Auto.	1.5	1.00	10.65	S, MX
	1725	48Y	M090253.00	D	354	A4P17NB54	22	115/230	Auto.	1.8	1.00	10.47	S, CN, 50
1/3	1750	48Y	101253.00	√	389	A4P17NB28	22	115/208-230	Auto.	1.9	1.00	10.65	S, MX, 50
	1625	48Y	100700.00	√	389	A4P17NB8	22	115/230	Auto.	1.6	1.00	10.65	S, MX
	1625	48Y	M099800.00	D	389	A4P17NB56	22	115/230	Auto.	1.8	1.00	10.79	S, CN
1625	56Y	111202.00	C/A	450	A6P17NZ1	24	115/230	Auto.	1.7	1.00	12.00	S, US, 58	
	1140	S56Y	100604.00	√	455	A4P11NH1	23	115/230	Auto.	1.8	1.00	11.40	S, MX
	1075	48Y	M099261.00	D	423	A4P11NB24	21	115/230	Auto.	1.5	1.00	11.34	S, CN
1075	48Y	A099261.00	√	423	A4P11NB53	21	115/230	Auto.	1.8	1.00	10.90	S, MX	
	1750	S56Y	101176.00	√	428	A4K17NH2	26	115/230	Auto.	3.5	1.00	10.40	S, MX, 50, 54
	1750	48Y	100701.00	√	419	A4P17NB9	29	115/230	Auto.	2.5	1.00	12.15	S, MX
1625	48Y	M099801.00	D	419	A4P17NB57	29	115/230	Auto.	2.5	1.00	10.79	S, CN	
	1060	48Y	M099946.00	D	438	A4P11NB28	26	115/230	Auto.	2.5	1.00	11.81	S, CN
	1075	48Y	A099946.00	√	438	A4P11NB54	26	115/230	Auto.	2.5	1.00	11.90	S, MX
3/4	1075	48Y	M099847.00	D	625	A6P11NB4	36	115/230	Auto.	3.6	1.00	13.56	S, CN
	1075	56HZ	A099847.00	√	625	A6P11NB5	35	115/230	Auto.	3.7	1.00	13.56	S, MX

C/A - Check Availability

♥ Note listing on inside back flap

D - Item to be discontinued once inventory is depleted

Specifications are subject to change without notice



View On-line Technical Information



Agricultural Duty Motors

Agricultural Fan

Typically used in Poultry houses or barn exhaust fans

Features:

- TEAO designs - continuous duty
- Extended thru-bolts
- 1/2" dia. x 2 1/2" long shaft with flats, 90° apart
- Fully gasketed
- Automatic overload protected
- Must be mounted in airstream for proper cooling



Single Phase - PSC - TEAO - Resilient Base

HP	SYN RPM 60 Hz	NEMA Frame	▼ Catalog Number	Stock	List Price	Model Number	App. Wgt. (lbs)	Voltage	Over-load Prot.	F. L. Amps @ 230 V	Service Factor	"C" Dim. (Inches)	♥Notes
1/4	1625	48Z	LM24445	✓	577	SPA4S0.25TZRY1A6027AP11-1	20	115/230	Auto.	1.8	1.00	11.06	S, MX
	1625	48Z	LM24447	C/A	447	SPA4S0.25TZRY1A6027AP10-1	17	115/230	Auto.	1.6	1.00	10.09	S, MX
1/3	1625	48Z	LM24450	✓	634	SPA4S0.33TZRY1A6027AP11-1	23	115/230	Auto.	1.9	1.00	11.81	S, MX
	1625	48Z	LM24448	✓	492	SPA4S0.33TZRY1A6027AP10-1	17	115/230	Auto.	2.2	1.00	10.09	S, MX
1/2	1075	48Z	LM24443	✓	612	SPA6S0.33TZRY1A6027AP10-1	15	115/230	Auto.	2.1	1.00	10.84	S, MX
	1625	48Z	LM24446	✓	703	SPA4S0.5TZRY1A6027AP11-1	23	115/230	Auto.	2.7	1.00	11.81	S, MX
	1625	48Z	LM24449	✓	544	SPA4S0.5TZRY1A6027AP10-1	21	115/230	Auto.	3.0	1.00	10.84	S, MX
	1075	48Z	LM24444	✓	703	SPA6S0.5TZRY1A6027AP10-1	19	115/230	Auto.	3.2	1.00	10.84	S, MX

▼ LM Numbers are Lincoln Models

C/A - Check Availability

Specifications are subject to change without notice

♥ Note listing on inside back flap

Used in Ag fan and blower applications.

Screens used to protect against entry of pests and and silage

Features:

- NEMA Premium and EPAct efficiency
- Rodent Screens
- Re-greasable Bearings
- Cast Iron construction
- 1.25 Service Factor
- Class F insulation
- Inverter Duty Insulation System
- UL Recognized and CSA certified

Grain Dryer / Centrifugal Fan Motors



Three Phase - Open Drip-Proof (ODP) - Rigid Base

HP	SYN RPM 60 Hz	NEMA Frame	Catalog Number	Stock	List Price	Model Number	App. Wgt. (lbs)	Voltage	F. L. Amps @ 230 V	F.L. Eff.	"C" Dim. (Inches)	♥Notes
10	1800	215T	G151828.60	✓	1,088	C215T17DB54	168	208-230/460	25.0	89.5	16.75	C, CN
15	1800	254T	G151540.60	✓	1,601	C254T17DB12	265	208-230/460	37.6	91.0	21.89	C, CN
		254T	170540.60	✓	2,076	C254T17DB45	279	208-230/460	37.0	93.0	20.94	C, CN
20	1800	256T	G151541.60	✓	1,991	C256T17DB7	307	208-230/460	48.0	91.7	23.54	C, CN
		256T	170541.60	✓	2,532	C256T17DB10	324	208-230/460	51.0	93.0	22.60	C, CN
25	1800	284T	G151829.60	C/A	2,177	C284T17DB11	388	208-230/460	59.6	91.7	23.54	C, CN
30	1800	286T	G151542.60	✓	2,773	C286T17DB12	434	208-230/460	72.0	92.4	26.57	C, CN
		286T	170542.60	✓	3,409	C286T17DB13	471	208-230/460	71.0	93.6	25.00	C, CN

Green items are Premium Efficient

C/A - Check Availability

Specifications are subject to change without notice

♥ Note listing on inside back flap

View On-line Technical Information



Explosion Proof Motors

Automotive Duty Motors

Pump Motors

Washguard Motors

Agricultural Motors

HVAC / Fan Motors

Special Voltage Motors

Definite Purpose Motors

Brake Motors

Agricultural Duty Motors

Aeration Fan Motors

Features:

- Belt driven fans or fan on shaft applications
- Capacitor start designs
- Must be mounted in airstream for proper cooling
- Epoxy paint to resist corrosion
- Single-phase models have built-in terminal boards



Single Phase - Capacitor Start - TEAO - Rigid Base

HP	SYN RPM 60 Hz	NEMA Frame	Catalog Number	Stock	List Price	Model Number	App. Wgt. (lbs)	Voltage	Over- load Prot.	F. L. Amps @ 230 V	Service Factor	"C" Dim. (Inches)	♥Notes
3/4	3450	56Z	111332.00	√	448	C6C34NB15	27	115/230	None	5.0	1.00	10.90	S, US, 22
1	3450	56Z	111333.00	√	532	C6C34NB16	29	115/230	None	6.0	1.00	10.90	S, US, 22
1 1/2	3450	56Z	111949.00	√	687	C6C34NB19	32	115/230	None	8.5	1.00	11.40	S, US, 22
	3450	143TZ	120374.00	√	739	C143C34NB1	31	115/230	None	8.5	1.00	11.84	S, US, 22
2	3450	145TZ	120375.00	√	900	C145C34NB1	41	230	None	10.0	1.00	13.34	S, US, 23
3	3450	145T	120376.00	√	947	C145K34NB1	45	230	None	12.8	1.00	13.84	S, US, 53

Specifications are subject to change without notice

♥ Note listing on inside back flap



Three Phase - TEAO - Rigid Base

HP	SYN RPM 60 Hz	NEMA Frame	Catalog Number	Stock	List Price	Model Number	App. Wgt. (lbs)	Voltage	F. L. Amps @ 230 V	Service Factor	"C" Dim. (Inches)	♥Notes
3/4	3450	56Z	111334.00	√	459	C6T34NB18	21	208-230/460	2.4	1.00	9.90	S, US, 22
1	3450	56Z	111335.00	√	498	C6T34NB19	22	208-230/460	3.2	1.00	9.90	S, US, 22
1 1/2	3450	143TZ	120377.00	√	572	C143T34NB2	31	208-230/460	4.2	1.00	11.34	S, US, 22
2	3450	145TZ	120378.00	√	677	C145T34NB1	34	208-230/460	5.6	1.00	11.84	S, US, 22
3	3450	145T	120379.00	√	759	C145T34NB2	38	230/460	7.6	1.00	12.34	S, US, 23

Specifications are subject to change without notice

♥ Note listing on inside back flap



View On-line Technical Information

Used on Crop Dryers with air over/fan on shaft designs

Features:

- Class "F" insulation system
- Overload protected
- Keyed shaft with 1/4-20 UNC tapped hole on end
- 34" long leads
- Capacitors shipped loose on 1-phase designs
- Motor venting protected against insects and rodents
- Double sealed ball bearings



Single Phase - Drip-Proof Air Over - Rigid Base

HP	SYN RPM 60 Hz	NEMA Frame	▼ Catalog Number	Stock	List Price	Model Number	App. Wgt. (lbs)	Voltage	Over-load Prot.	F. L. Amps @ 230 V	Service Factor	"C" Dim. (Inches)	♥Notes
3-4.5	3600	145TZ	LM24778	✓	1,199	SSD2S3-4.5TZ1B66QS10-1	46	230	Auto	13-19	1.50	13.74	S, MX
5 - 7	3600	182TZ	131847.00	✓	1,408	C182C34DB2	91	230	T-Stat	27.2-35	1.00	16.44	S, MX
7.5-10	3600	182TZ	131848.00	✓	1,565	C182K34DB4	95	230	T-Stat	31-42	1.00	16.44	S, MX
7 - 10	3600	184TZ	LM24780	✓	1,962	SSD2S7-10TZ1B66QS11-1	102	230	T-Stat	31-42	1.40	15.94	S, MX
7 - 9	3600	184TZ	LM24781	C/A	1,589	SSD2S7-9TZ1C66QS11-1	88	230	T-Stat	31-42	1.30	15.50	S, MX
10 - 15	3600	215TZ	140640.00	✓	2,406	C215K34DB2	159	230	T-Stat	39.5-61.5	1.00	20.42	S, MX
	3600	215TZ	LM24782	✓	2,492	SS215D2S10-15TZ1C66QS11-1	135	230	T-Stat	39.5-61.5	1.50	18.16	S, MX
	3600	215TZ	141084.00	✓	2,406	C215K34DB3	159	230	T-Stat	40-59	1.00	20.08	S, MX, 52

▼ LM Numbers are Lincoln Models

♥ Note listing on inside back flap

Note 52 - Extra High Starting Torque

C/A - Check Availability

Specifications are subject to change without notice

Three Phase - Drip-Proof Air Over - Rigid Base

HP	SYN RPM 60 Hz	NEMA Frame	▼ Catalog Number	Stock	List Price	Model Number	App. Wgt. (lbs)	Voltage	Over-load Prot.	F. L. Amps @ 230 V	Service Factor	"C" Dim. (Inches)	♥Notes
5-7.5	3600	184TZ	131849.00	✓	1,140	C184T34DB8	70	208-230/460	T-Stat	19.0	1.00	13.94	S, MX
7.5-10	3600	184TZ	131850.00	✓	1,331	C184T34DB9	85	208-230/460	T-Stat	24.2	1.00	15.44	S, MX
10 - 15	3600	215TZ	140641.00	✓	1,606	C215T34DB3	95	208-220/440	T-Stat	40.0	1.50	17.41	S, MX

Specifications are subject to change without notice

♥ Note listing on inside back flap

Used in Tobacco Barns and other applications that require a fan motor in a high ambient condition.

Features:

- Drip-proof airover designs
- Class H insulation for high ambient conditions
- 80° C ambient rated
- 120 inch leads
- Oversized double sealed bearings
- 1/4-20 tapped hole at end of shaft



Tobacco Barn Motors



Single Phase - Drip Proof Air Over - Rigid Base

HP	SYN RPM 60 Hz	Frame	Catalog Number	Stock	List Price	Model Number	App. Wgt. (lbs)	Voltage	Over-load Prot.	Phase	F. L. Amps @ 230 V	Service Factor	"C" Dim. (Inches)	♥Notes
7.5	1800	215TVZ	140830.00	✓	1,761	215TBDW17041	125	230	34.5	1.15	18.04	S,MX	20.71	S, MX,
10	1800	215TVZ	140816.00	✓	2,624	C215K17DB13	150	230	44.0	1.15	20.65	S,MX	19.70	S, MX,

Specifications are subject to change without notice

View On-line Technical Information



Explosion Proof Motors

Automotive Duty Motors

Pump Motors

Washguard Motors

Agricultural Motors

HVAC / Fan Motors

Special Voltage Motors

Definite Purpose Motors

Brake Motors

Agricultural Duty Motors

Grain Stirring Motors

Used in Grain stirring systems inside grain bins

Features:

- TEFC, continuous duty
- High torque designs
- Rugged 205 bearing, shaft end
- Vertical shaft up design with drain hole
- 7/8" Dia. Shaft



Single Phase - Rigid Base - TEFC

HP	SYN RPM 60 Hz	Frame	▼ Catalog Number	Stock	List Price	Model Number	App. Wgt. (lbs)	Voltage	Over- load Prot.	F. L. Amps @ 230 V	Service Factor	"C" Dim. (Inches)	♥Notes
1 1/2	1800	56HZ	111330.00	√	874	P6K17FB18	42	115/208-230	Man.	8.6	1.00	12.31	S, US, 53
	1800	56HZ	LM24521	C/A	876	SRF4S1.5TZ1B6028AP9-2	47	115/208-230	Man.	7.6	1.15	13.21	S, US, 53

▼ LM Numbers are Lincoln Models

C/A - Check Availability

Specifications are subject to change without notice

♥ Note listing on inside back flap

Three Phase - Rigid Base - TEFC

HP	SYN RPM 60 Hz	Frame	▼ Catalog Number	Stock	List Price	Model Number	App. Wgt. (lbs)	Voltage	F. L. Amps @ 230 V	% F. L. Eff.	Service Factor	"C" Dim. (Inches)	♥Notes
1 1/2	1800	56HZ	111329.00	√	889	M6T17FB49	38	208-230/460	5.4	80.0	1.00	11.81	S, US, 53

Specifications are subject to change without notice

♥ Note listing on inside back flap

Catfish Pond Motors

Designed for outdoor pond aeration applications

Features:

- High torque designs
- Epoxy painted for corrosion protection
- Double sealed ball bearings
- Drain holes provided to purge condensation



Single Phase and Three Phase - C Face With Base - TEFC

HP	SYN RPM 60 Hz	Frame	Catalog Number	Stock	List Price	Model Number	App. Wgt. (lbs)	Voltage	Over- load Prot.	Phase	F. L. Amps @ 230 V	Service Factor	"C" Dim. (Inches)	♥Notes
10	1800	215TC	140705.00	√	2,657	P215K17FK5	204	230	Man.	1	40.0	1.15	20.71	S, MX,
	1800	215TC	140833.00	C/A	1,599	C215T17FK19	169	208-230/460	None	3	23.6	1.15	19.7	S, MX,

Green items are Premium Efficient

C/A - Check Availability

Specifications are subject to change without notice

♥ Note listing on inside back flap



View On-line Technical Information

Agricultural Duty Motors Irrigation Booster Pump Motors

Used in agricultural duty irrigation systems

Features:

- Threaded jet pump motor shaft
- Vertical Shaft down design
- Rain canopy provided
- Epoxy painted for corrosion protection
- Neoprene shaft flinger



Three Phase - Irrigation Booster - TEFC

HP	SYN RPM 60 Hz	NEMA Frame	▼ Catalog Number	Stock	List Price	Model Number	App. Wgt. (lbs)	Voltage	F. L. Amps @ 460 V	Service Factor	"C" Dim. (Inches)	♥Notes
2	3600	56J	112991.00	√	853	A6T34FC33	33	460	2.8	1.5	14.34	S, US

Specifications are subject to change without notice

♥ Note listing on inside back flap

Irrigation Drive Motors

Features:

- Double-sealed ball bearings
- Designed for vertical shaft down applications
- Rain canopy protects against water contamination



Three Phase - C Face Less Base - TEFC

HP	SYN RPM 60 Hz	NEMA Frame	▼ Catalog Number	Stock	List Price	Model Number	App. Wgt. (lbs)	Voltage	F. L. Amps @ 460 V	Service Factor	"C" Dim. (Inches)	♥Notes
1	1800	56C	111304.00	√	824	A6T17FC33	30	460	75	1.3	12.34	S, US

Specifications are subject to change without notice

♥ Note listing on inside back flap

Milk Transfer Pump Motor

Features:

- Direct replacement for Surge milk pumps
- Double sealed ball bearings
- Epoxy painted for corrosion protection
- Permanent split capacitor design
- Requires 30MFD, 370V. capacitor - not supplied



Single Phase - Rigid Base - TENV

HP	SYN RPM 60 Hz	NEMA Frame	▼ Catalog Number	Stock	List Price	Model Number	App. Wgt. (lbs)	Voltage	F. L. Amps @ 230 V	Service Factor	"C" Dim. (Inches)	♥Notes
1/2	3600	56CZ	113939.00	√	572	C6P34NK5	42	230	4.5	SPEC	13.07	S, US

Specifications are subject to change without notice

♥ Note listing on inside back flap

View On-line Technical Information



Explosion Proof Motors

Automotive Duty Motors

Pump Motors

Washguard Motors

Agricultural Motors

HVAC / Fan Motors

Special Voltage Motors

Definite Purpose Motors

Brake Motors

Agricultural Duty Motors

Feed-Auger Drive Motors - Dust Tight

Replacement motors for poultry feed auger drive systems



Features:

- Choice of mechanical or solid state starting switch
- Mechanical switch has over-speed protection - Note 51
- Manual overload protected

Single Phase - TEFC - 60 Hertz

HP	SYN RPM 60 Hz	NEMA Frame	▼ Catalog Number	Stock	List Price	Model Number	App. Wgt. (lbs)	Voltage	Over-load Prot.	F. L. Amps @ 230 V	Service Factor	"C" Dim. (Inches)	♥Notes
1/3	1800	48YZ	101159.00	√	584	P4C17FZ11	21	115/230	Man.	3.1	1.00	10.47	S, MX, 26
	1800	56YZ	117887.00	√	561	117887.00	21	115/208-230	Man.	2.9	1.00	12.00	S, MX, 26, 51, 64
	1800	48N	LM24462	√	564	SPA4S0.33TADN1C6027TP1	23	115/230	Man.	2.5	1.50	11.31	S, MX, 26, 51
1/2	1800	48YZ	101120.00	√	657	P4C17FZ7	22	115/208-230	Man.	4.0	1.15	10.72	S, MX, 26
	1800	56YZ	117888.00	√	643	117888.00	22	115/208-230	Man.	4.2	1.25	12.00	S, MX, 26, 51, 64
	1800	48N	LM24463	√	643	SPA4S0.5TADN1C6027TP1	23	115/230	Man.	3.4	1.00	11.81	S, MX, 26, 51
3/4	1800	48YZ	101119.00	√	768	P4C17FZ6	24	115/208-230	Man.	5.4	1.00	11.47	S, MX, 26
	1800	56YZ	117889.00	√	661	117889.00	28	115/208-230	Man.	4.2	1.25	12.00	S, MX, 26, 51, 64
	1800	48N	LM24812	√	666	SRF4S0.75TZADN1C6028TP1-1	31	115/208-230	Man.	5.5	1.00	12.59	S, MX, 26, 51
1	1800	56YZ	112615.00	√	850	P6C17FZ27	35	115/230	Man.	7.0	1.00	12.11	S, MX, 27
	1800	56YZ	117883.00	√	829	117883.00	35	115/208-230	Man.	5.4	1.25	12.00	S, MX, 27, 51, 64
	1800	56NZ	LM24813	√	829	SRF4S1TZADN1C6028TP-1	32	115/208-230	Man.	6.7	1.00	13.39	S, MX, 27, 51
1 1/2	1800	56YZ	113280.00	√	1,412	P6K17FZ6	47	115/208-230	Man.	6.5	1.00	13.62	S, MX, 27, 53
	1800	56YZ	113301.00	D	1,393	M6K17FZ7	44	115/230	Man.	6.5	1.00	13.62	S, MX, 27, 51, 53
	1800	56YZ	117884.00	√	1,393	117884.00	44	115/208-230	Man.	6.5	1.15	14.51	S, MX, 27, 51, 53, 64
	1800	56NZ	LM24814	√	1,394	SRF4S1.5TZADN1C6028TP1-1	41	115/208/230	Man.	7.6	1.00	14.38	S, MX, 27, 51, 53

▼ LM Numbers are Lincoln Models

♥ Note listing on inside back flap

Note 64 - Stub shaft on ODE for manual jogging

D - Item to be obsoleted when inventory is depleted

Specifications are subject to change without notice

Single Phase - TEFC - 50 Hertz

HP	SYN RPM 60 Hz	NEMA Frame	Catalog Number	Stock	List Price	Model Number	App. Wgt. (lbs)	Voltage	Over-load Prot.	F. L. Amps @ 220 V	Service Factor	"C" Dim. (Inches)	♥Notes
1/2	1800	48YZ	101643.00	√	711	M4C14FZ5	26	110/220	Man.	4.0	1.00	11.47	S, MX, 26, 51
3/4	1800	48YZ	101644.00	√	764	M4C14FZ6	30	110/220	Man.	5.8	1.00	12.22	S, MX, 26, 51
1	1800	56YZ	113906.00	√	928	M6C14FZ8	39	110/220	Man.	6.4	1.00	12.61	S, MX, 27, 51
1 1/2	1800	56YZ	113907.00	√	1,551	P6K14FZ2	48	110/220	Man.	8.6	1.00	13.61	S, MX, 27, 51

Specifications are subject to change without notice

♥ Note listing on inside back flap



View On-line Technical Information

Agricultural Duty Motors

Hatchery and Incubator Fan Motors

Replacement motors for hatchery and incubator fan motors

Features:

- Automatic overload protected
- 15MFD, 370V. capacitor shipped loose with motor 101341.00
- Motor 114102.00 is a split phase two-speed motor
- Double shielded ball bearings



Cat. No. 101341.00



Cat. No. 114102.00

Single Phase - TEAO

HP	SYN RPM 60 Hz	NEMA Frame	Catalog Number	Stock	List Price	Model Number	App. Wgt. (lbs)	Voltage	Over-load Prot.	F. L. Amps @ 230 V	Service Factor	"C" Dim. (Inches)	♥Notes
1/4	1800	48Y	101341.00	✓	442	A4P17NZ24	17	115/230	Auto.	1.4	1.00	8.93	S, US, 16, 34, 58
1/2-0.22	1800/1200	56H	114102.00	✓	576	A6S46NR4	33	115	Auto.	9.3-5.6*	1.25	11.81	S, US

* Full Load amps are at high speed and low speeds, respectively at 115 volts

♥ Note listing on inside back flap

Specifications are subject to change without notice

Replacement motors used in Poultry feather picker machines

Features:

- Phosphatized or stainless steel shafts drilled and tapped metric shafts
- Epoxy painted for corrosion protection
- Stainless motor - 122009.00
- Encapsulated Stainless motor - 122010.00
- Washdown duty features including shaft seals
- USDA approved food-safe paint
- Extra high breakdown torques



Feather Picker Motors



Three Phase - TEFC

HP	SYN RPM 60 Hz	NEMA Frame	Catalog Number	Stock	List Price	Model Number	App. Wgt. (lbs)	Voltage	F. L. Amps @ 230 V	F.L. Eff.	Service Factor	"C" Dim. (Inches)	♥Notes
2	1800	145T	121934.00	✓	914	C145T17FB87	54	208-230/460	7.0	86.5	1.25	14.76	S, US
	1800	145T	122009.00	✓	2,161	C145T17WK49	58	208-230/460	5.8	86.5	1.25	13.25	S, US
	1800	145T	122010.00	✓	2,192	C145T17WK50	75	208-230/460	5.6	84.0	1.15	12.75	S, US
2/1.5	1200	184TZ	132246.00	✓	1,392	C184T11FB24	96	230/460	7.2	88.5	1.50	15.96	S, MX
	1200	112M	132247.00	✓	1,456	C184T11FB25	96	230/460	7.2	88.5	1.50	15.96	S, MX, 29
3	1800	56HZ	115751.00	✓	1,029	C6T17FB113	45	208-230/460	8.6	82.5	1.00	14.25	S, US, 5
	1800	145T	121944.00	✓	1,029	C145T17FB92	45	230/460	8.6	82.5	1.00	14.25	S, US, 56

Green items are Premium Efficient

♥ Note listing on inside back flap

Note: Catalog Number 115751.00 has a 303 stainless steel shaft.

Specifications are subject to change without notice

View On-line Technical Information



Explosion Proof Motors

Automotive Duty Motors

Pump Motors

Washguard Motors

Agricultural Motors

HVAC / Fan Motors

Special Voltage Motors

Definite Purpose Motors

Brake Motors

Agricultural Duty Motors

Industry-AG • High Torque

General Purpose, heavy duty for industrial and agriculture applications

Features:

- Manual overload protected
- Double sealed ball bearings
- Weather resistant reset button protection
- Capacitor start provides high starting torque



Rigid Base - 115-208/230V - TEFC

HP	SYN RPM 60 Hz	NEMA Frame	Catalog Number	Stock	List Price	Model Number	App. Wgt. (lbs)	Voltage	Over- load Prot.	F. L. Amps @ 230 V	Service Factor	"C" Dim. (Inches)	♥Notes
1/3	1800	56	M002256.00	D	450	M6C17FB142	24	115-208/230	Man.	2.9	1.15	11.00	S, CN
	1800	56	117862.00	√	386	C6C17FB164	20	115-208/230	Man.	3.3	1.15	11.82	S, MX
1/2	1800	56	117863.00	√	439	C6C17FB165	26	115-208/230	Man.	4.4	1.15	11.82	S, MX
3/4	1800	56	117864.00	√	520	C6C17FB166	33	115-208/230	Man.	5.5	1.15	12.32	S, MX
1	1800	56	117865.00	√	564	C6C17FB167	33	115-208/230	Man.	6.7	1.15	12.82	S, MX
1 1/2	1800	56	M009089.00	D	772	M6K17FB49	41	115-208/230	Man.	9.0	1.00	12.88	S, CN
	1800	56H	117866.00	√	678	C6K17FB61	50	115-208/230	Man.	7.6	1.15	13.82	S, MX
2	1800	56HZ	117867.00	√	776	C6K17FB62	50	230	Man.	9.4	1.15	14.87	S, MX

"M00" Series motors use C Face Kit M064076.00

♥ Note listing on inside back flap

D - Item to be obsoleted when inventory is depleted

Specifications are subject to change without notice

C Face Less Base - 115-208/230 - TEFC

HP	SYN RPM 60 Hz	NEMA Frame	Catalog Number	Stock	List Price	Model Number	App. Wgt. (lbs)	Voltage	Over- load Prot.	F. L. Amps @ 230 V	Service Factor	"C" Dim. (Inches)	♥Notes
1/3	1800	56C	M002290.00	D	547	M6C17FC140	24	115-208/230	Man.	2.9	1.15	10.81	S, CN
	1800	56C	117878.00	√	416	C6C17FC178	23	115-208/230	Man.	3.3	1.15	11.82	S, MX
1/2	1800	56C	M009492.00	D	600	M6C17FC141	27	115-208/230	Man.	3.9	1.15	10.81	S, CN
	1800	56C	117879.00	√	468	C6C17FC179	24	115-208/230	Man.	4.4	1.15	11.82	S, MX
3/4	1800	56C	M009493.00	D	677	M6C17FC142	30	115-208/230	Man.	5.0	1.15	11.31	S, CN
	1800	56C	117880.00	√	546	C6C17FC180	28	115-208/230	Man.	5.5	1.15	12.32	S, MX
1	1800	56C	117881.00	√	592	C6C17FC181	30	115-208/230	Man.	6.7	1.15	12.82	S, MX

D - Item to be obsoleted when inventory is depleted

♥ Note listing on inside back flap

Specifications are subject to change without notice



View On-line Technical Information

Agricultural Duty Motors

Variable Speed - High Performance AG Fan Motors

Designed for use in agricultural fan applications where variable speed is required

Features:

- Water-tight connection end compartment
- Locked double sealed ball bearings
- All angle mounting
- Shaft seal on output shaft end
- Automatic overload protected



Single Phase - TEAO - Rigid Base - Extended Thru-Bolts

HP	SYN RPM 60 Hz	NEMA Frame	Catalog Number	Stock	List Price	Model Number	App. Wgt. (lbs)	Voltage	Over- load Prot.	F. L. Amps @ 230 V	Service Factor	"C" Dim. (Inches)	♥Notes
1/4	1625	48Y	M099899.00	D	340	A4P17NB58	18	115-208/230	Auto.	1.3	1.00	11.30	S, CN
	1625	48Y	A099899.00	✓	340	A4P17NZ139	19	115-208/230	Auto.	1.4	1.00	10.89	S, MX
	1060	48Y	M099460.00	D	367	A4P11NB25	21	115-208/230	Auto.	1.3	1.00	11.80	S, CN
	1060	48Y	A099460.00	✓	367	A4P11NB5		115-208/230	Auto.				S, MX
1/3	1625	48Y	M099900.00	D	362	A4P17NB59	19	115-208/230	Auto.	1.8	1.00	11.30	S, CN
	1625	48Y	A099900.00	✓	362	A4P17NZ141	20	115-208/230	Auto.	1.6	1.00	10.89	S, MX
	1060	48Y	M099461.00	D	392	A48P11NB26	22	115-208/230	Auto.	1.9	1.00	11.80	S, CN
	1060	48Y	A099461.00	✓	392	A4P17NZ86	23	115-208/230	Auto.	1.8	1.00	11.14	S, MX
1/2	1625	48Y	M099901.00	D	402	A4P17NB60	22	115-208/230	Auto.	2.6	1.00	11.70	S, CN
	1625	48Y	A099901.00	✓	402	A4P17NZ142	23	115-208/230	Auto.	2.2	1.00	11.39	S, MX
	1060	48Y	M099462.00	D	428	A4P11NB27	25	115-208/230	Auto.	2.8	1.00	12.20	S, CN
	1060	48Y	A099462.00	✓	428	A4P911NZ85	26	115-208/230	Auto.	2.8	1.00	11.39	S, MX

D = Item to be obsolete once inventory has been depleted
 Specifications are subject to change without notice

♥ Note listing on inside back flap

Agricultural Fan Motors - Belt Drive • TEAO

Designed for use in agricultural belted fan applications

Features:

- Capacitor start / Capacitor run designs for high efficiency
- Mount in airstream for proper cooling
- Combination 56 / 140 frame stamped steel base



High-Efficiency - Single-Phase

HP	SYN RPM 60 Hz	NEMA Frame	Catalog Number	Stock	List Price	Model Number	App. Wgt. (lbs)	Voltage	Over- load Prot.	F. L. Amps @ 230 V	Service Factor	"C" Dim. (Inches)	♥Notes
1/2	1725	56	M009580.00	D	492	A6K17NB21	27	115/208-230	-	2.2	1.00	10.33	S, CN
	1725	56	A009580.00	✓	492	A6K17NB30	27	115/208-230	-	2.3	1.15	11.44	S, MX
3/4	1725	56H	M009581.00	D	521	A6K17NB15	30	115/208-230	Auto.	3.4	1.00	10.83	S, CN
	1725	56H	A009581.00	✓	521	A6K17NB29	30	115/208-230	Auto.	3.3	1.00	11.44	S, MX
1	1725	56H	M009782.00	D	542	A6K17NB17	37	115/208-230	Auto.	4.3	1.00	11.80	S, CN
	1725	56H	A009782.00	✓	542	A6K17NB33	37	115/208-230	Auto.	4.0	1.00	12.44	S, MX
1 1/2	1725	56H	M009594.00	D	647	A6K17NB16	39	115/208-230	Auto.	6.8	1.00	12.60	S, CN
	1725	56H	A009594.00	✓	647	A6K17NB32	39	115/208-230	Auto.	5.8	1.00	11.94	S, MX
2	1725	145T	M009595.00	D	718	M145K17NB	47	230	Auto.	9.5	1.00	12.80	S, CN, *
	1725	145T	A009595.00	✓	718	U145K17NB	47	230	Auto.	9.2	1.00	13.49	S, MX *

* Motor M009595 has a frame mounted conduit box.

♥ Note listing on inside back flap

D = Item to be obsolete once inventory has been depleted
 Specifications are subject to change without notice

View On-line Technical Information



Explosion Proof Motors

Automotive Duty Motors

Pump Motors

Washguard Motors

Agricultural Motors

HVAC / Fan Motors

Special Voltage Motors

Definite Purpose Motors

Brake Motors

Agricultural Duty Motors

Agriculture Fan

115/230 Volts - Belt Drive - Overload Protection

Features:

- Capacitor start/capacitor run design
- Ball bearings
- LM24777 must be mounted in airstream



Single Phase - TENV - Rigid Base

HP	SYN RPM 60 Hz	NEMA Frame	▼ Catalog Number	Stock	List Price	Model Number	App. Wgt. (lbs)	Voltage	Over- load Prot.	F. L. Amps @ 230 V	Service Factor	"C" Dim. (Inches)	♥Notes
1/2	1725	56Z	LM24776	√	692	SRN4S0.5TZ1B6027TP2-1	21	115/230	Auto	2.3	1.00	10.47	S, MX, 12, 53
1	1725	56Z	LM24777	√	926	SRA4S1TZ1B6027TP2-1	32	115/230	Auto	4.6	1.00	10.72	S, MX, 53, *

▼ LM Numbers are Lincoln Models

* LM24777 is a TEAO design

♥ Note listing on inside back flap

Specifications are subject to change without notice

Agriculture Fan

Direct Drive Thru-Bolt Mount

Features:

- 1/2" long thru-bolts
- 48Y - 1/2" dia., 1-1/2 long shaft with flat
- 48YZ - 1/2" dia., 2-1/2" long shaft with two flats



Single Speed - Single Phase - TEAO - Thru-Bolt Mount

HP	SYN RPM 60 Hz	NEMA Frame	▼ Catalog Number	Stock	List Price	Model Number	App. Wgt. (lbs)	Voltage	Over- load Prot.	F. L. Amps @ 115 V	Service Factor	"C" Dim. (Inches)	♥Notes
1/4	1725	48Y	LM24488	C/A	421	SPN4S0.25TZNY1S6001TP1-1	10	115	Auto	4.0	1.00	7.62	S, MX

▼ LM Numbers are Lincoln Models

C/A - Check Availability

Specifications are subject to change without notice

♥ Note listing on inside back flap

Two Speed - Single Phase - TEAO - Thru-Bolt Mount

HP	SYN RPM 60 Hz	NEMA Frame	▼ Catalog Number	Stock	List Price	Model Number	App. Wgt. (lbs)	Voltage	Over- load Prot.	F. L. Amps @ 115 V	Service Factor	"C" Dim. (Inches)	♥Notes
1/4	1725	48YZ	LM24492	C/A	439	SPA4/6/1S0.25/0.25TZNY1S6001TP2-1	17	115	Auto	4.1	1.00	11.09	S, MX
1/3	1725	48YZ	LM24491	C/A	494	SPA4/6/1S0.33/0.33TZNY1S6001TP2-1	18	115	Auto	5.3	1.00	11.34	S, MX

▼ LM Numbers are Lincoln Models

C/A - Check Availability

Specifications are subject to change without notice

♥ Note listing on inside back flap



View On-line Technical Information

Agricultural Duty Motors

Agriculture Fan

Features:

- 115 & 230 Volts • Single Phase
- Extended thru-bolts on 48Z frame motos
- 48Z - 1/2 dia. shaft, 2-1/2 long with two flats
- 56Z - 1/2 dia. shaft, 2-1/2" long shaft with keyway
- Includes 5/8" shaft adaptor sleeve with key



Single Phase - TEAO - Resilient Base

HP	SYN RPM 60 Hz	NEMA Frame	▼ Catalog Number	Stock	List Price	Model Number	App. Wgt. (lbs)	Voltage	Over-load Prot.	F. L. Amps @ 230 V	Service Factor	"C" Dim. (Inches)	♥Notes
1/4	1725	48Z	LM24487	C/A	439	SPA4S0.25TZRY1S6001TP2-1	17	115	Auto	3.5	1.00	10.09	S, MX
1/3	1725	48Z	LM24486	✓	494	SPA4S0.33TZRY1S6001TP2-1	21	115	Auto	4.5	1.00	10.09	S, MX
1/2	1725	56Z	LM24809	C/A	667	SRA4S0.5TZR1S6027TP2-1	24	115/230	Auto	6.6	1.00	11.34	S, MX

▼ LM Numbers are Lincoln Models

♥ Note listing on inside back flap

* Amps at 115 Volts

C/A - Check Availability

Specifications are subject to change without notice

Aeration Fan, HVAC

115 & 230 VOLTS • Single Phase

Features:

- Automatic overload protected
- Sealed bearings
- 18" extended leads
- Shaft has keyway and 1/4-20 UNC tapped hole on end of shaft

Single Phase - TEAO - Rigid Base

HP	SYN RPM 60 Hz	NEMA Frame	▼ Catalog Number	Stock	List Price	Model Number	App. Wgt. (lbs)	Voltage	Over-load Prot.	F. L. Amps @ 230 V	Service Factor	"C" Dim. (Inches)	♥Notes
1	3450	56Z	LM24786	✓	536	SRA2S1TZ1C6027L10MB6TP2-1	29	115/230	Auto	5.6	1.15	10.94	S, MX
1 1/2	3475	143TZ	LM24787	✓	608	SSA2S1.5TZ1C6027L10MB6TP2-1	35	115/230	Auto	8.4	1.15	11.49	S, MX
3	3510	145TZ	LM24788	✓	749	SS145A2S3TZ1B66L10MB6TP2-1	52	230	Auto	11.8	1.15	13.49	S, MX

▼ LM Numbers are Lincoln Models

♥ Note listing on inside back flap

Specifications are subject to change without notice

View On-line Technical Information



Explosion Proof Motors

Automotive Duty Motors

Pump Motors

Washguard Motors

Agricultural Motors

HVAC / Fan Motors

Special Voltage Motors

Definite Purpose Motors

Brake Motors